



CASE STUDY



Building a Predictive Safety Culture Across Diverse Construction Operations

INDUSTRY

Construction – Commercial & Specialty Projects

Employees: 175+

Trade Divisions: Concrete, Metal Framing & Drywall, Waterproofing, Facilities Management

Use Case: Daily pre-task safety reviews, hazard identification, inspections, and near-miss reporting

The Challenge

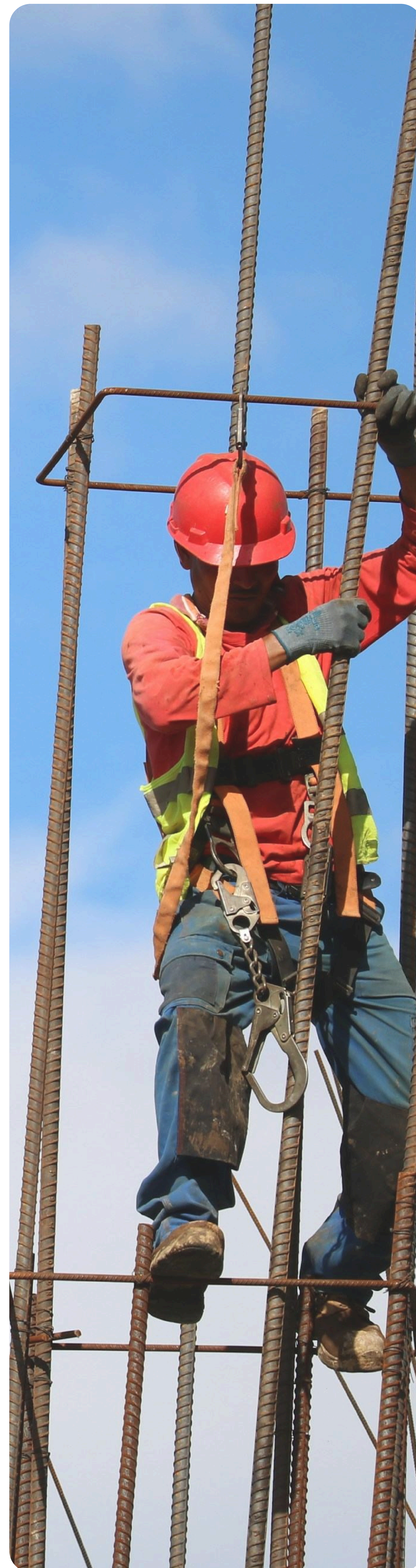
Lee Construction Group, a fifth-generation family-owned business based in Charlottesville, Virginia, delivers complex projects across the state – from historic renovations and estate builds to hospitals, educational facilities, and commercial structures.

Despite a deeply ingrained safety culture, the company's **safety processes were limited by disconnected systems and partial digitization**. Their teams lived in two worlds: one foot in paper and one in digital. The result was a strong desire to improve communication and deploy integrated systems that **create workflow consistency, improve visibility, and eliminate field frustrations**.

Key Challenges

- **Safety documentation trapped in a project management system**, used mainly as digital storage rather than an engagement platform.
- **Field supervisors felt burdened by redundant paperwork** that didn't add value to jobsite safety.
- **Inconsistent data capture** limited proactive risk management.
- **Senior leadership lacked real-time insights into field conditions**, relying on reactive reviews.

Goal: Establish a unified, proactive safety ecosystem that drives engagement, strengthens compliance, and leverages AI for early risk identification.



About the Company

Founded in 1939, Lee Construction Group operates with over 175 employees across multiple trades. Pioneering, Honorable, and Professional are Lee Construction Group's core values. These values permeate the entire culture, shining through all facets of the company, including safety. From leadership down, each person is called upon to follow these values. Pioneering means examining what you are doing, and finding new, better ways to approach things.

As such, Lee Construction Group looked to the latest technology to find a practical and digital solution to lift their safety program to the next level. The EHS team sought a system that preserved the human element of safety while using technology to strengthen foresight and decision-making.

Why Field1st

Lee Construction selected Field1st to modernize its safety program through a single, AI-powered platform tailored for frontline adoption.

Key Capabilities

- **Voice1st Data Capture:** Supervisors complete daily pre-task safety forms by voice, streamlining workflows and reducing paperwork.
- **AI Hazard Recognition:** Jobsite photos are analyzed automatically to identify hazards and suggest controls.
- **AI Safety Agent:** Provides in-app, real-time guidance and safety coaching aligned to OSHA and company policy.
- **Self-Service Form Builder:** Digitizes existing safety forms and approval workflows without requiring IT intervention.
- **Unified Analytics:** Delivers real-time visibility into hazard trends, compliance status, and leading indicators across projects.

Results

Within the first several months of implementation, Lee Construction shifted from reactive reporting to predictive safety engagement. Field1st helped unite teams around consistent, data-driven safety practices.

- **100% of supervisors using Field1st** for daily pre-task planning.
- **Faster completion of safety documentation** with voice-driven forms.
- **Improved hazard closeout rates** through real-time alerts and accountability tracking.
- **Enhanced leadership visibility** into safety metrics across divisions.
- **Cultural transformation** from a group of dedicated safety collaborators to a **proactive, data-drive, and prevention-focused safety organization.**

*“Field1st gave us the visibility we were missing. It’s not just easier for the field – it’s **changing how we manage safety.** We’re finally living in the proactive space, **spotting issues before they become incidents.**”*

**-Shelomith Gonzalez,
Safety Manager, Lee Construction Group**

 **field1ST**

KEY OUTCOMES

Objective

Field1st Impact

Increase Visibility

Real-time dashboards and AI-driven insights across all sites

Reduce Admin Time

Voice-enabled data capture and simplified workflows

Boost Engagement

Seamless integration with existing processes to drive adoption

Strengthen Compliance

Automated routing and standardized reporting

Predict & Prevent Risks

AI analytics identify trends before incidents occur



A B O U T F I E L D 1 S T

Field1st transforms safety from a checklist into a predictive, connected culture – one that spreads top down, bottom up, and side to side, empowering every foreman, supervisor, and safety professional at Lee Construction Group to act on insights that prevent incidents and sustain operational excellence.